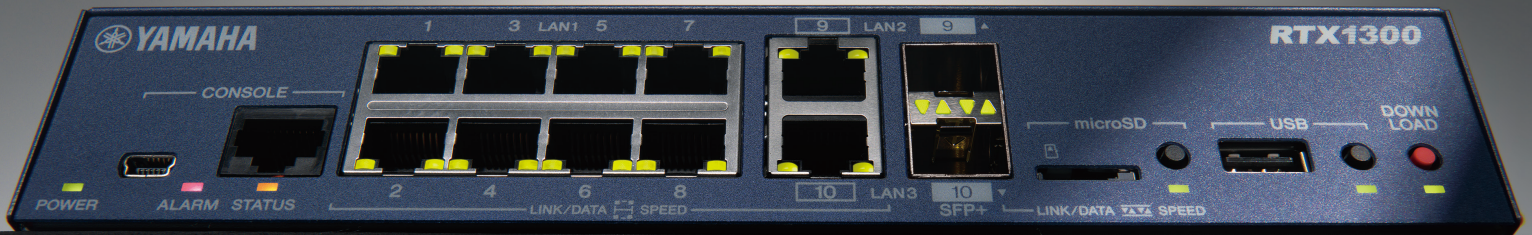


10Gigabit Access VPN Router

RTX1300

Take the First Step Towards 10G Together



The First Yamaha Router Equipped with 10Gbps-Compatible Ports

The 10-Gigabit-ready combo ports (LAN port / SFP+ slot) enable high-speed communication over a 10-Gigabit fiber-optic connection. Additionally, by combining them with 10-Gigabit-compatible switches and Wi-Fi 6-compatible LAN access points, you can enhance both LAN and WAN speeds.

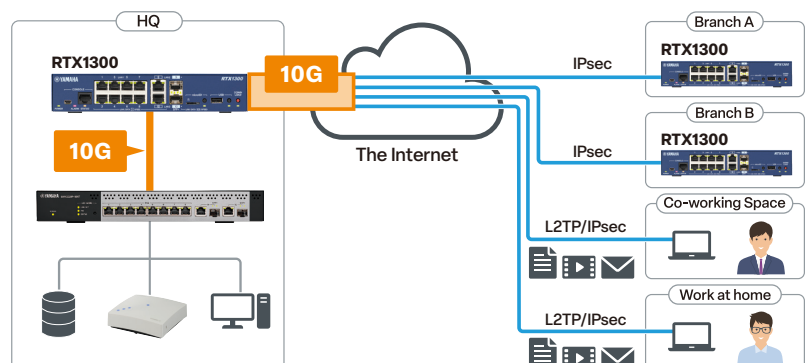
Equipped with 2 Combo ports
Supporting 10Gbps



Next-Level Processing Performance

Throughput and overall performance are greatly improved compared to conventional routers. High processing power ensures stable communication, even with 10Gbps connections and advanced VPNs.

- **Throughput:** Max 9.9Gbps
- **IPsec Throughput:** Max 3.8Gbps
- **NAT Sessions:** Up to 250,000
- **VPN Concurrent Sessions:** Up to 1,100 sessions (Default 100 sessions)



Specifications

Interface	LAN Ports	8 ports (10BASE-T/100BASE-TX/1000BASE-T, Auto MDI/MDI-X or Fixed Straight)
	SFP+ Slots	SFP+ Slots
	WAN Port	WAN Port
	microSD Slot	microSD Slot
Memory	Flash ROM	Flash ROM
	RAM	RAM
Performance	Built-in L2 switch function	Built-in L2 switch function
	Functions for closed network services	Functions for closed network services
	Tag VLAN (IEEE 802.1Q)	Tag VLAN (IEEE 802.1Q)
	Number of PPPoE sessions	Number of PPPoE sessions
Supported lines and service networks (*1)		FTTH (OPTICAL FIBER), ADSL, CATV, ATM LINE, IP-VPN NETWORK, WIDE-AREA ETHERNET NETWORK, MOBILE PHONE NETWORK, DATA CONNECT
IP v4 connection format		Native, Tunnel, DHCP, PPPoE
IP v6 connection format		Native, Tunnel, RA Proxy, DHCPv6-PD, PPPoE, IPv6
Routing	Routed Protocols	IPv4, IPv6
	IP v4 Routing Protocols	RIP, RIP2, OSPF, BGP4 (EBGP, IBGP)
	IP v6 Routing Protocols	RIPng, OSPFv3
	Number of route entries	20,000 (*5)
	OSPF Neighbor Count	100 (*5)
	Number of OSPF routes	Total when connected to 10 neighbors or less: 15,000, Total when connected to 100 neighbors: 3,000
Data Compression	BGP4 Peer Count	32
	Number of BGP4 routes	20,000 (*5)
Throughput	IPComp, CCP (Stac LZS), VJC	
	Throughput	Max 9.9Gbit/s (*6)
VPN Locations	IPsec Throughput	Max 3.8Gbit/s (*7)
	sum	100 (expandable up to 1,100 (*8)) (*9)
	IPsec	100 (expandable up to 1,100 (*8))
	L2TP/IPsec	100 (expandable up to 1,100 (*8))
	L2TPv3	9 (expandable up to 29 (*8))
	PPTP	4
VPN function	Multipoint Tunnel	100
	IPsec (VPN function: NAT traversal, XAUTH) + AES128/256, 3DES, DES (encryption function: hardware processing) + IKEv1 (main mode, aggressive mode) / IKEv2, IKEv2 / IPsec remote access (PSK) (*10), PPTP (VPN function) + RC4 (encryption function) (*11), L2TP/IPsec, L2TPv3, L2TPv3/IPsec, IPsec tunnel, Multipoint tunnel (server/client), IPsec route auto-add function	
NAT	Address Translation Function (NAT Descriptor Function)	NAT, IP Masquerading, Static NAT, Static IP Masquerading, DMZ Host Function, PPTP Passthrough (Multiple Sessions) (*12), IPsec Passthrough (1 Session), FTP Support, Traceroute Support, Ping Support, SIP-NAT Support (*13), IP Masquerading Conversion Session Limit, Port Saving IP Masquerading, Hairpin NAT
	Number of NAT Sessions	250,000
QoS	QoS function (control method)	Priority control, Bandwidth control (Dynamic Traffic Control), Dynamic Class Control, Tunnel QoS, Bandwidth detection, Load notification
	QoS function (classification method)	IP address, protocol, port number, ToS field
Security	QoS function (linkage with network-side QoS function)	Diffserv, Coloring (ToS), ToS → CoS conversion
	Authentication function	RADIUS, PAP/CHAP, MS-CHAP/MS-CHAPv2
	Security Features	URL filter (internal database lookup type), DHCP terminal authentication function, Winny filter (Winny Version 2 compatible), Share filter (Share version 1.0 EX2 compatible), MAC address filter
	Firewall function (IPv4/IPv6 static filtering)	IP Address, Port, Protocol (Established, with TCP flag), FQDN, Source/Destination, Applies to LAN/WAN side IN/OUT
	Firewall function (IPv4/IPv6 dynamic filtering)	Basic Application (TCP, UDP), Applied Application (FTP, TFTP, DNS, WWW, SMTP, POP3, TELNET), FREE DEFINITION, APPLIES TO IN/OUT ON LAN/WAN SIDE
	Number of Dynamic Filter Sessions	250,000
Backup	Firewall function (IDS: IPv4 unauthorized access detection)	Applies to IN/OUT on LAN side/WAN side, IP header, IP option header, 41 types of unauthorized access can be detected in categories such as ICMP/UDP/TCP/FTP, unauthorized access detection email notification function
	Backup function	VRPP, Floating Static, Network Path Backup, LAN/PP/PP/Tunnel Interface Backup, Wireless WAN Backup, Backup Email Notification
Management/Settings	IP keepalive ground count	100 (expandable up to 1,100 (*8)) (*14)
	Statistical management functions	Dashboard functions (system information, resource information, interface information, traffic information, provider connection status, VPN connection status, YNO agent operation status, number of NAT sessions, number of fastpath flows, number of dynamic filter sessions, keyword check statistics of URL, unauthorized access detection history, SYSLOG)
	YNO	YNO Agent Function, GUI Forwarder, Zero Config, LAS
	LAN management	L2MS Manager (*15), VLAN Batch Configuration, Snapshot Function, Redundant LAN Cable, LAN Map, List Map
	SNMP	SNMP (v1, v2c, v3)
	Logging Capabilities	Storage in memory, Output by SYSLOG, Output to external memory (microSD, USB memory) (with encryption function), Log saving when the power switch is turned off (power-off log saving function), Reboot log saving function
Other features	Log Storage Capacity	Up to 10,000 rows
	Means of setting	Console, TELNET server (multiplexed), TELNET client, SSH server (multiplexed), SSH client, Web GUI (custom GUI compatible), Configuration via external memory (microSD, USB memory), Download/upload via TFTP/SFTP/SCP
Extensions	Recommended browsers for GUIs	(*16) -Windows: Microsoft Edge, Google Chrome, Mozilla Firefox -macOS: Safari -iPadOS: Safari
	Other features	DHCP SERVER, DHCP CLIENT, DHCP RELAY AGENT, DNS RECURSIVE SERVER, DNS SERVER SELECTION FUNCTION, CIDR, PROXY ARP, SNTP SERVER, NTP CLIENT, LAN SECONDARY ADDRESS SETTING, FILTERED ROUTING, LOOPBACK/NULL INTERFACE, PACKET FORWARDING FILTER, MULTIHOMING, Scheduling function, Survival notification function, Netvoluntary DNS service support (*17), UPnP support, Wake on LAN support, NAT46/DNS46 function
Hardware	Extensions	Lua Scripts
	Status indicator	Front: 30 (POWER, ALARM, STATUS, LAN [LINK×10, SPEED×10], SFP+ [LINK×2, SPEED×2], microSD, USB, DOWNLOAD), Back: 0
	Operating environment conditions	Ambient temperature 0 to 45°C, ambient humidity 15 to 80% (non-condensing)
	Power	AC100-240V(50/60Hz)(*18), Built-in power supply, Power inlet (3-pole connector, C14 type), Power switch
	Maximum consumption power (picophase power), maximum consumption current, heat consumption	25.9W (48VA), 0.48A, 93.24kJ/h
	Energy-saving features	Energy Efficient Ethernet (EEE), shutting down unused LAN ports and SFP+ slots, shutting down microSD slots/USB ports
	Temperature measurement in the enclosure	-
	Case	Metal housing, Cooling fans: 2
	Radio wave barrier specifications, environmental load substance management	VCCI Class A, RoHS
	External dimensions	220(W) × 42(H) × 294(D) mm (Protrusions not included)
Weight (not including accessories)	1.9kg	
Accessory	Power cord, Power cord relief bracket, Read before you begin (including warranty card), Rubber feet, Dust cover (factory installed, installed in SFP+ slot)	
Default IP address	192.168.100.1	

(*1) To connect to lines such as ADSL, CATV, or FTTH (fiber optic), a separate ADSL modem, cable modem, or media converter may be required. In addition, some internet service providers may not allow simultaneous use by multiple computers, so please check with your service provider. (*2) Operation of all USB memory devices is not guaranteed. USB hubs cannot be used. The list of USB data communication devices confirmed to work is available on the technical information website. (*3) Please use a commercially available USB Mini-B cable. (*4) The values indicated are the maximum values confirmed by Yamaha through testing. (*5) Throughput values are measured based on RFC2544 (without NAT, without filters, with multiple bidirectional flows processed by multi-core). (*6) The values when using AES+SHA1 are measured with multiple bidirectional flows processed by multi-core. (*7) When the VPN expansion license is applied, the maximum number of sessions increases according to the number of licenses applied. (*8) The total upper limit applies when multiple types of VPNs are used simultaneously. (*9) Only remote access connections from Android, iOS, and iPadOS are supported. The supported OS versions for each client are listed on the technical information website. (*10) This product includes RSA® BSAFE™ software from RSA Security Inc. RC4 and BSAFE are registered trademarks of RSA Security Inc. in the United States and other countries. (*11) For PPTP clients, multiple sessions are supported. For PPTP servers, only one session is supported. (*12) The number of monitoring destinations when using only the IP keepalive function, without combining it with VPN or network backup features. (*13) L2MS (Layer2 Management Service) is a function that manages Yamaha network devices at the Layer 2 level. Devices compatible with the L2MS agent are listed on the technical information (RTPro) website. (*14) We recommend using the latest version of your web browser. (*15) The Netvoluntary DNS service cannot be used in internet environments (such as CATV) that use private IP addresses like "10.x.x.x", "172.16.x.x-172.31.x.x", or "192.168.x.x". (*16) Please use the attached power cord.

Names of Each part



Safety Precautions • Before installing or using this product, please be sure to carefully read and follow the precautions and prohibitions described in the instruction manual.

Company names and product names described in this catalog are generally trademarks or registered trademarks of their respective companies.

Contact Detail